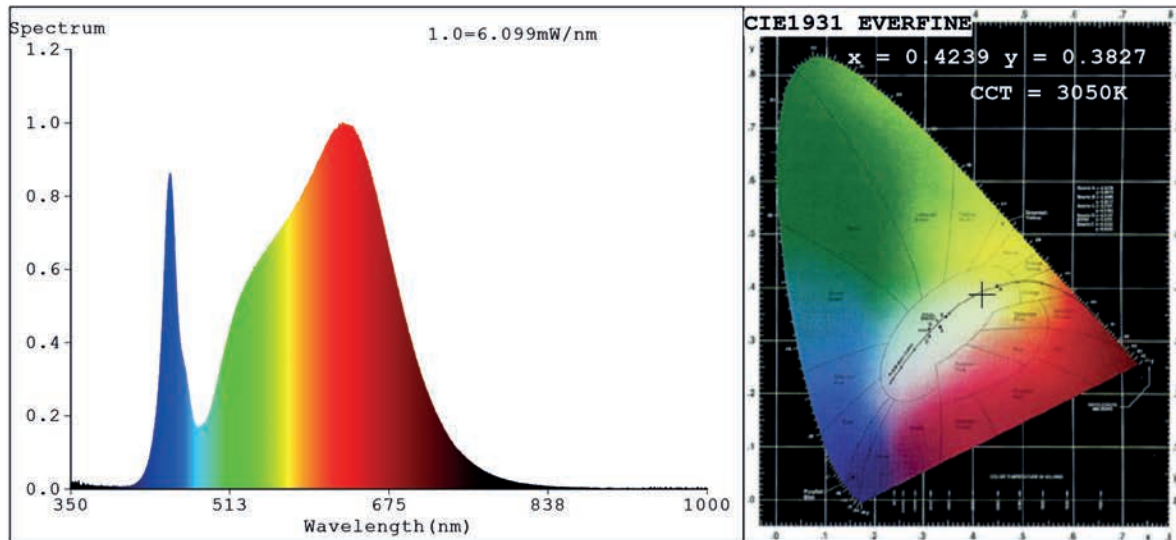


Spectrum Test Report



Color Parameters:

Chromaticity Coordinate: $x=0.4239$ $y=0.3827$ $u'=0.2514$ $v'=0.5107$
 CCT=3050K (Duv=-0.0069) Dominant WL:Ld =585.6nm Purity=42.1%
 Ratio:R=24.4% G=73.0% B=2.6%; Peak WL:Lp=627.3nm FWHM=168.8nm
 Render Index:Ra=93.0 CRI=90.5 TM30:Rf=87 Rg=105
 R1 =95 R2 =96 R3 =93 R4 =92 R5 =94 R6 =92 R7 =93
 R8 =89 R9 =77 R10=88 R11=91 R12=77 R13=95 R14=95 R15=95

Photo Parameters:

Flux = 300.8 lm Eff. : 29.85 lm/W Fe = 1.110 W

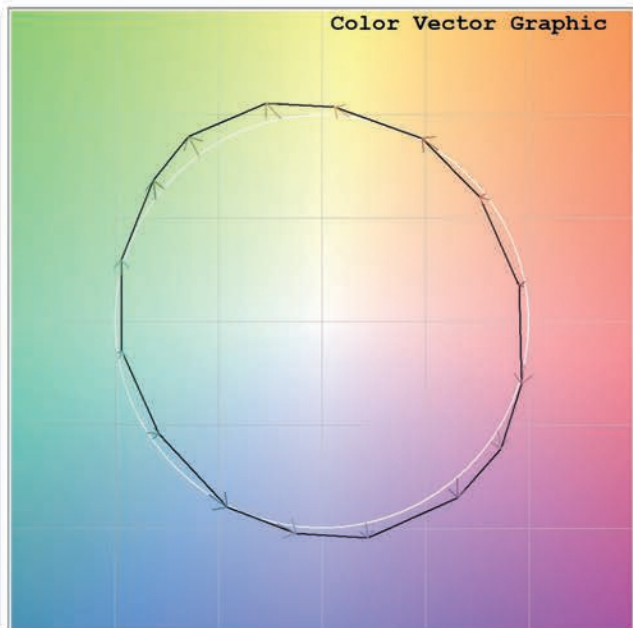
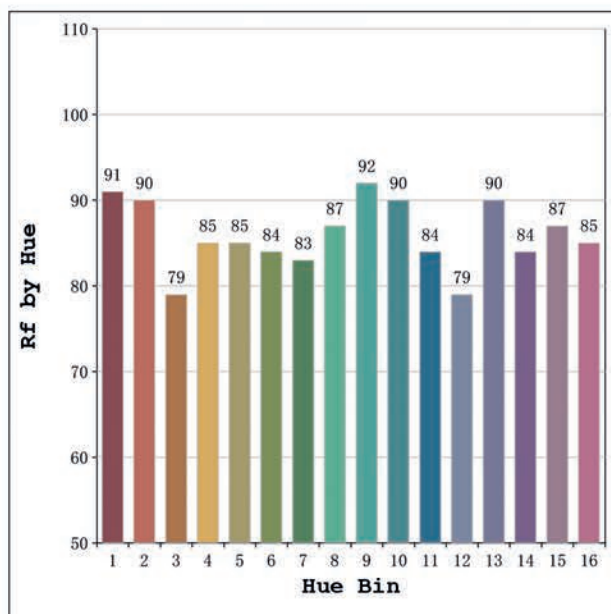
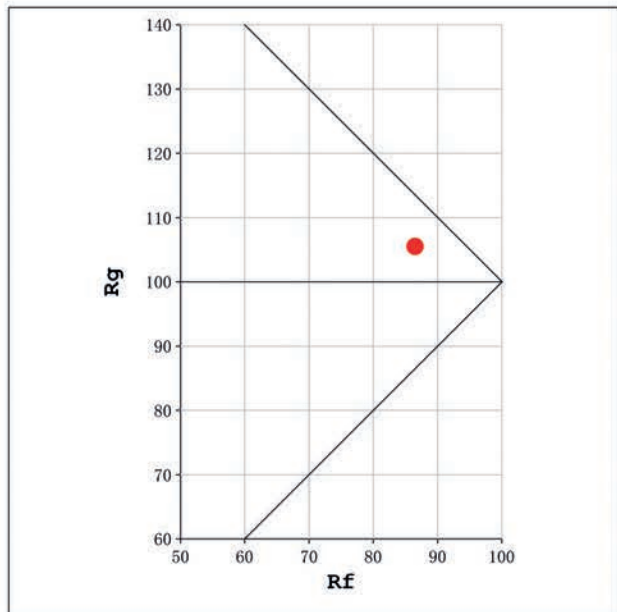
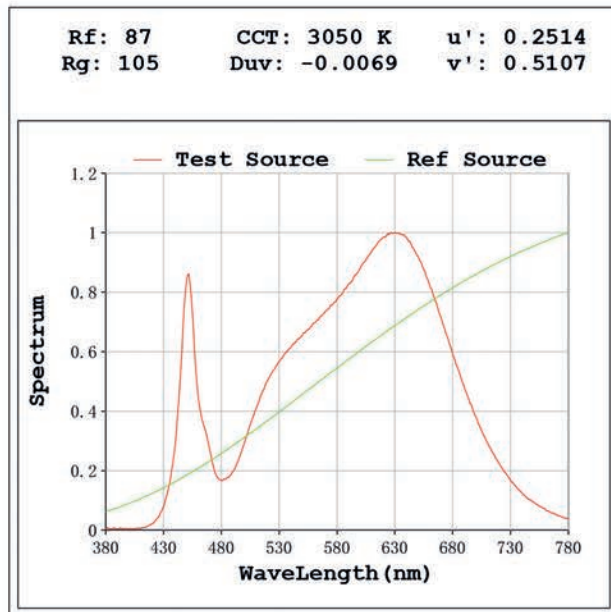
Electrical parameters:

V = 23.998 V I = 0.4199 A P = 10.08 W PF = 1.000

Status: Integral T = 4466 ms Ip = 49075 (75%)

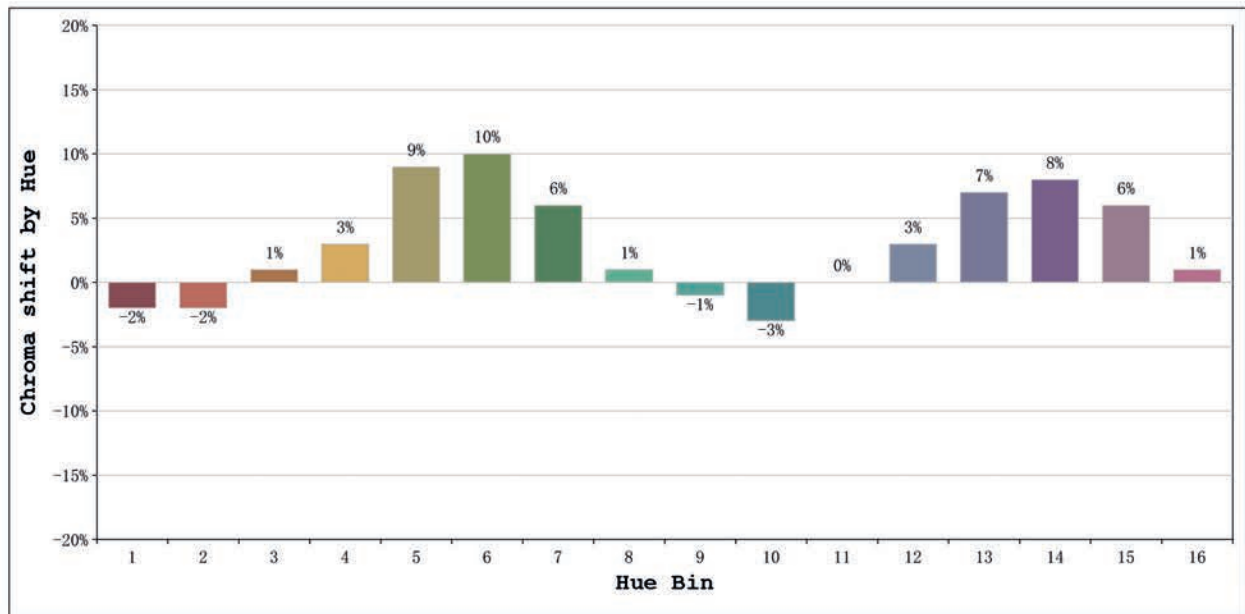
Model:Ecoled Neón Africa 3000k
 Tester:Sergio Carneros
 Temperature:27Deg
 Manufacturer:Luz Negra S.L

Number: 10.247
 Date:2025-03-24 12:08:16
 Humidity:40%
 Remarks:100cm de neón



Model:Ecoled Neón Africa 3000k
 Tester:Sergio Carneros
 Temperature:27Deg
 Manufacturer:Luz Negra S.L

Number: 10.247
 Date:2025-03-24 12:08:16
 Humidity:40%
 Remarks:100cm de neón



			Graphic shift(%)	
Hue Bin	Hue Angle	Rf	Chroma	Hue
1	0.0° - 22.5°	91	-2	-1
2	22.5° - 45.0°	90	-2	4
3	45.0° - 67.5°	79	1	10
4	67.5° - 90.0°	85	3	8
5	90.0° - 112.5°	85	9	6
6	112.5° - 135.0°	84	10	0
7	135.0° - 157.5°	83	6	-6
8	157.5° - 180.0°	87	1	-7
9	180.0° - 202.5°	92	-1	-2
10	202.5° - 225.0°	90	-3	3
11	225.0° - 247.5°	84	0	11
12	247.5° - 270.0°	79	3	10
13	270.0° - 292.5°	90	7	0
14	292.5° - 315.0°	84	8	-4
15	315.0° - 337.5°	87	6	-6
16	337.5° - 360.0°	85	1	-8

Model:Ecoled Neón Africa 3000k
 Tester:Sergio Carneros
 Temperature:27Deg
 Manufacturer:Luz Negra S.L

Number: 10.247
 Date:2025-03-24 12:08:16
 Humidity:40%
 Remarks:100cm de neón